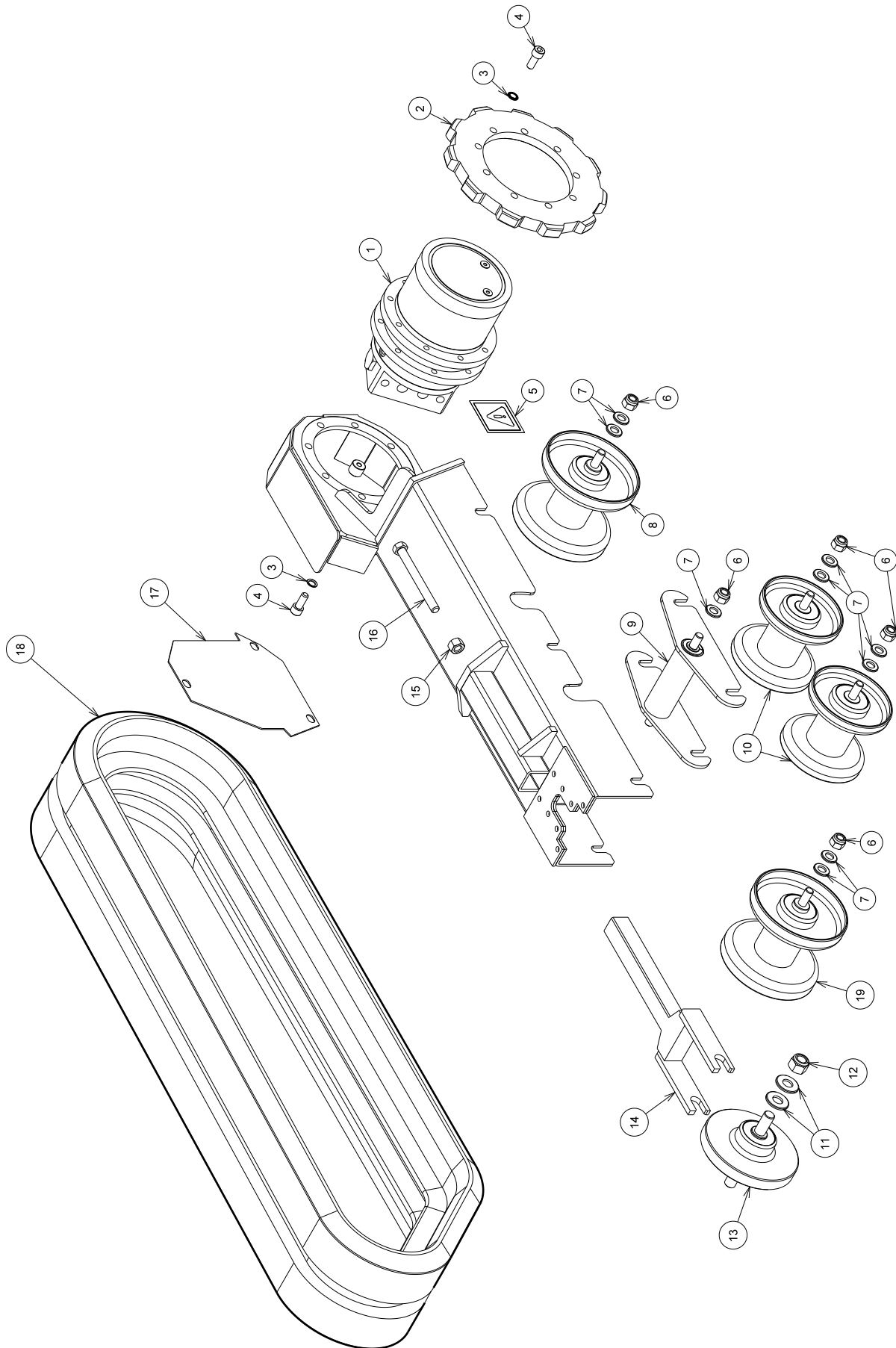


SPEEDY – CUTTER 1200 PARTS LEGENDA

TABLE A

POSITION	DESCRIPTION	PART NO.	QUANTITY
1	GEARMOTOR	970-010-S	2
2	11 TEETH GEAR WHEEL	123-9193-S	2
3	ELASTIC WASHER – SNORR Ø 10	015-252-S	-
4	TCEI M10x25 12.9 SCREW	133-1820-S	-
5	DANGER TRIANGULAR STICKER	238-926-S	2
6	M12 SELF LOCKING NUT	137-060-S	-
7	FLAT WASHER 13x24x2,5	015-034-S	-
8	TRACK SLIDE ROLLER ASSEMBLY	024-9050-S	2
9	ROLLERS BALANCING FORK ASSEMBLY	024-9056-S	2
10	TRACK SLIDE ROLLER ASSEMBLY	024-9054-S	4
11	FLAT WASHER 16x35x3	015-048-S	-
12	M16 SELF LOCKING NUT	137-080-S	-
13	TRACK TIGHTENER WHEEL ASSEMBLY	024-9051-S	2
14	TRACK TIGHTENER WHEEL FORK	196-903-S	2
15	HEXAGONAL NUT M12	135-060-S	-
16	M12x120 TE SCREW	132-210-S	-
17	GEARMOTOR PROTECTIVE CASE	005-9145-S	2
18	TRACK	156-990-S	2
19	STRENGTHENED TRACK SLIDE ROLLER ASSEMBLY	024-90505-S	2



SPEEDY – CUTTER 1200 PARTS LEGENDA

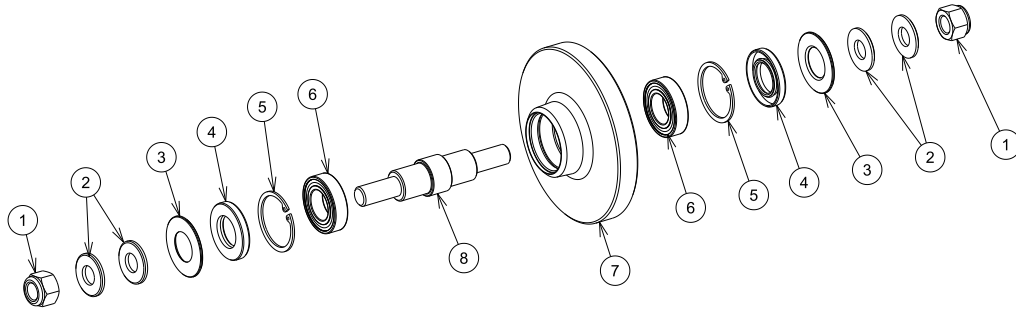
TABLE B

024-9051-S ASSEMBLY EXPLODED VIEW			
POSITION	DESCRIPTION	PART NO.	QUANTITY
1	M16 SELF LOCKING NUT	137-080-S	2
2	PLAIN WASHER ø16	015-048-S	2
3	SHAFT SEAL SPACER	009-921-S	2
4	SHAFT SEAL	151-037-S	2
5	SEEGER ø 47	109-047-S	2
6	BEARING	159-9025-S	2
7	TRACK TIGHTENING WHEEL	123-922-S	1
8	TRACK TIGHTENING WHEEL PIN	018-924-S	1
024-90505-S ASSEMBLY EXPLODED VIEW			
POSITION	DESCRIPTION	PART NO.	QUANTITY
3	SHAFT SEAL SPACER	009-921-S	2
4	SHAFT SEAL	151-037-S	2
5	SEEGER ø 47	109-047-S	2
6	BEARING	159-9025-S	2
9	M12 SELF LOCKING NUT	137-060-S	2
10	PLAIN WASHER ø13	015-034-S	4
11	TRACK SLIDE ROLLER PIN	018-925-S	1
12	STRENGTHENED TRACK SLIDE ROLLER	123-9185-S	1
024-9050-S ASSEMBLY EXPLODED VIEW			
POSITION	DESCRIPTION	PART NO.	QUANTITY
3	SHAFT SEAL SPACER	009-921-S	2
4	SHAFT SEAL	151-037-S	2
5	SEEGER ø 47	109-047-S	2
6	BEARING	159-9025-S	2
9	M12 SELF LOCKING NUT	137-060-S	2
10	PLAIN WASHER ø13	015-034-S	4
11	TRACK SLIDE ROLLER PIN	018-925-S	1
12	TRACK SLIDE ROLLER	123-918-S	1
024-9056-S ASSEMBLY EXPLODED VIEW			
POSITION	DESCRIPTION	PART NO.	QUANTITY
9	M12 SELF LOCKING NUT	137-060-S	2
10	PLAIN WASHER ø13	015-034-S	2
13	FLANGED BUSHING	223-8065-S	2
14	TRACK SLIDE ROLLER FORK PIN	018-9257-S	1
15	TRACK TIGHTENING WHEEL FORK	196-904-S	1

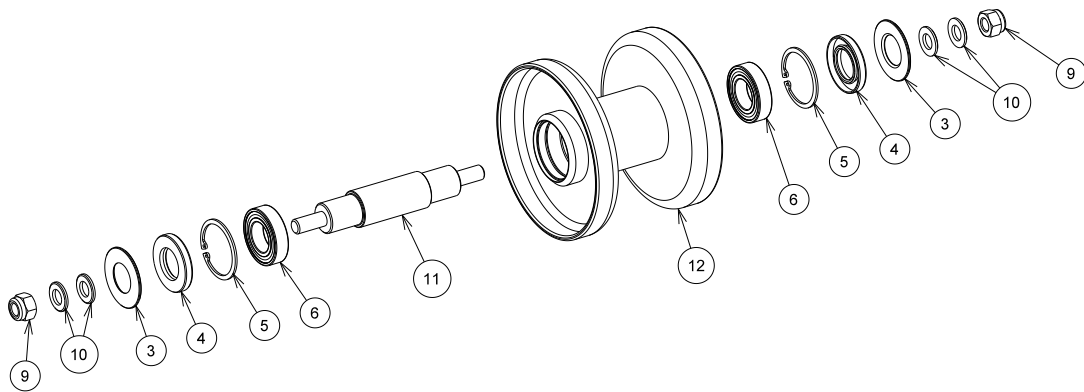
024-9054-S ASSEMBLY EXPLODED VIEW

POSITION	DESCRIPTION	PART NO.	QUANTITY
3	SHAFT SEAL SPACER	009-921-S	2
4	SHAFT SEAL	151-037-S	2
5	SEEGER \varnothing 47	109-047-S	2
6	BEARING	159-9025-S	2
9	M12 SELF LOCKING NUT	137-060-S	2
10	PLAIN WASHER \varnothing 13	015-034-S	4
16	TRACK SLIDE ROLLER PIN	018-9255-S	1
17	TRACK SLIDE ROLLER	123-9190-S	1

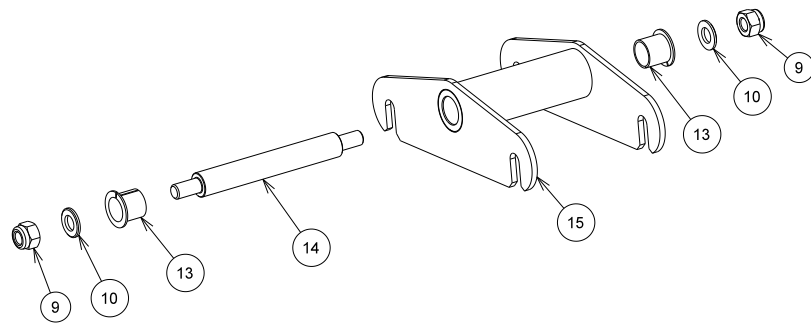
ESPLOSO ASSEMBLATO 024-9051-S



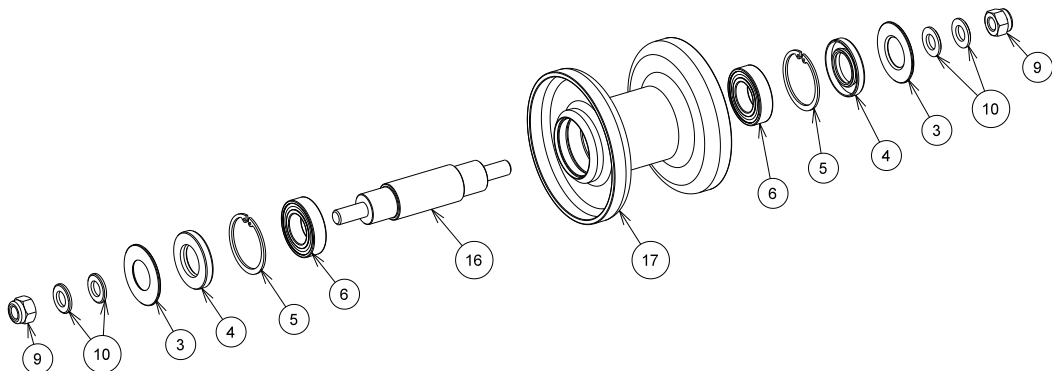
ESPLOSO ASSEMBLATO 024-9050-S - 024-90505-S



ESPLOSO ASSEMBLATO 024-9056-S



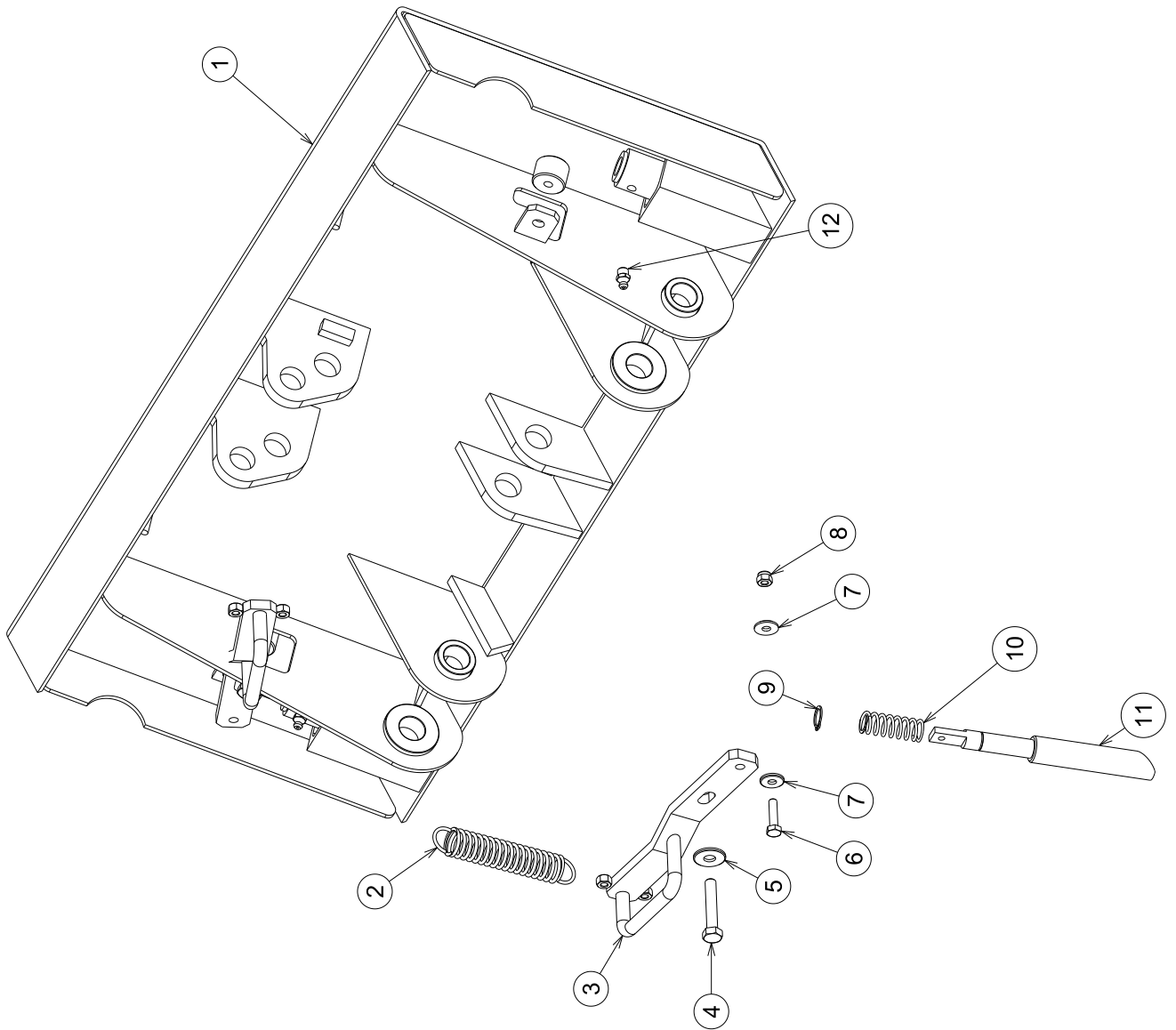
ESPLOSO ASSEMBLATO 024-9054-S



SPEEDY – CUTTER 1200 PARTS LEGENDA

TABLE C

POSITION	DESCRIPTION	PART NO.	QUANTITY
1	QUICK COUPLING BODY	053-934265-S	1
2	SPRING	043-907-S	2
3	PIN LOCK/UNLOCK HANDLE	120-9082-S	2
4	TE SCREW M8x45	132-106-S	-
5	WASHER Ø 8	015-031-S	-
6	TE SCREW M6x25	132-065-S	-
7	WASHER Ø 6	015-029-S	-
8	SELF LOCKING NUT M6	137-030-S	-
9	SEEGER	109-014-S	2
10	SPRING	043-905-S	2
11	QUICK COUPLING PIN	018-9372-S	2
12	GREASER	265-008-S	2

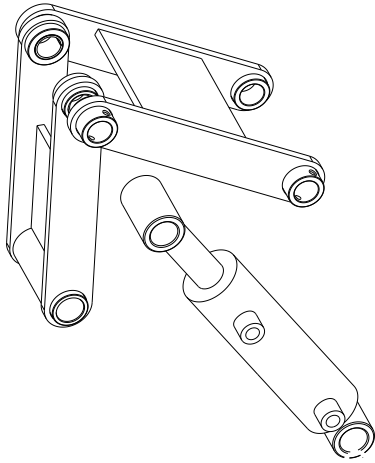


SPEEDY – CUTTER 1200 PARTS LEGENDA

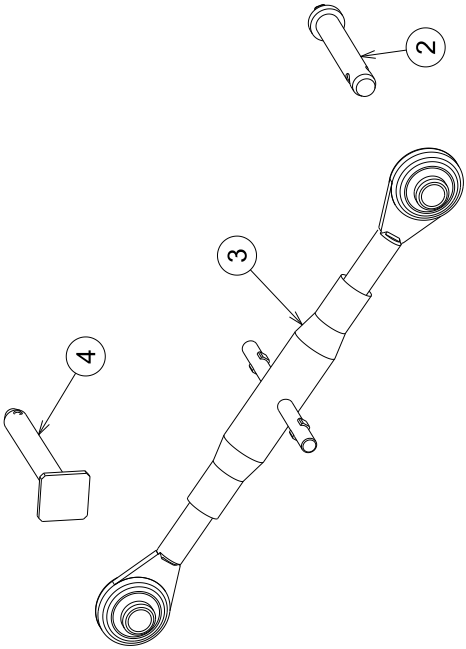
MECHANIC THIRD LINK KIT PART No. 044-904802-S

TABLE D

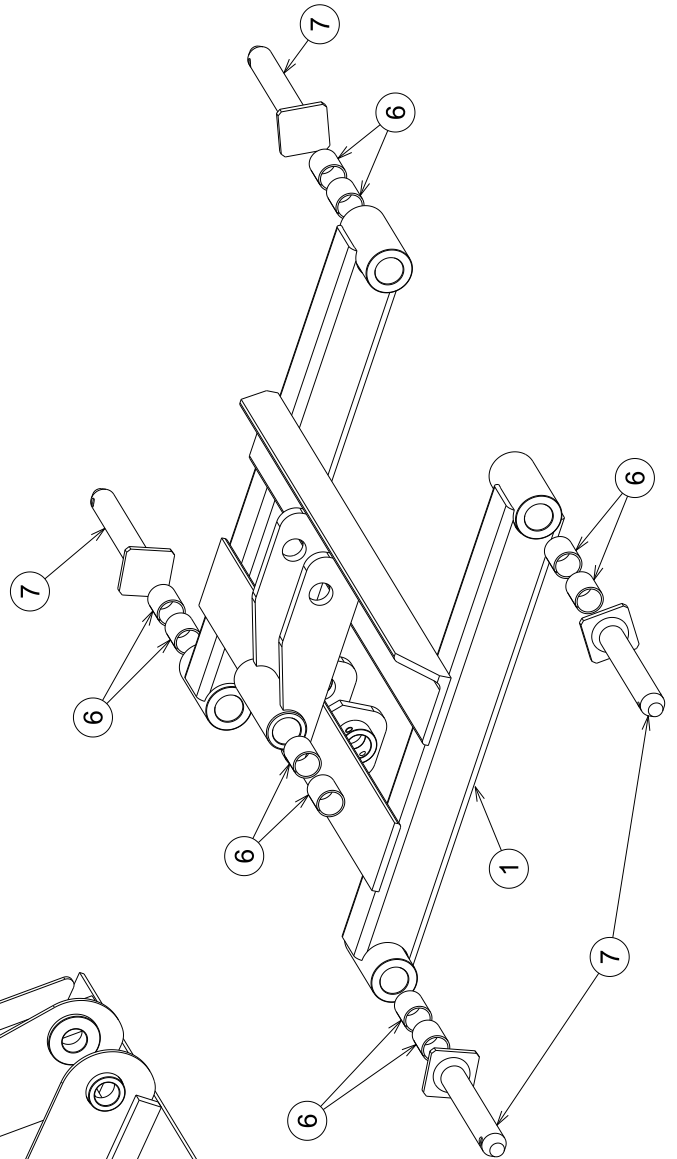
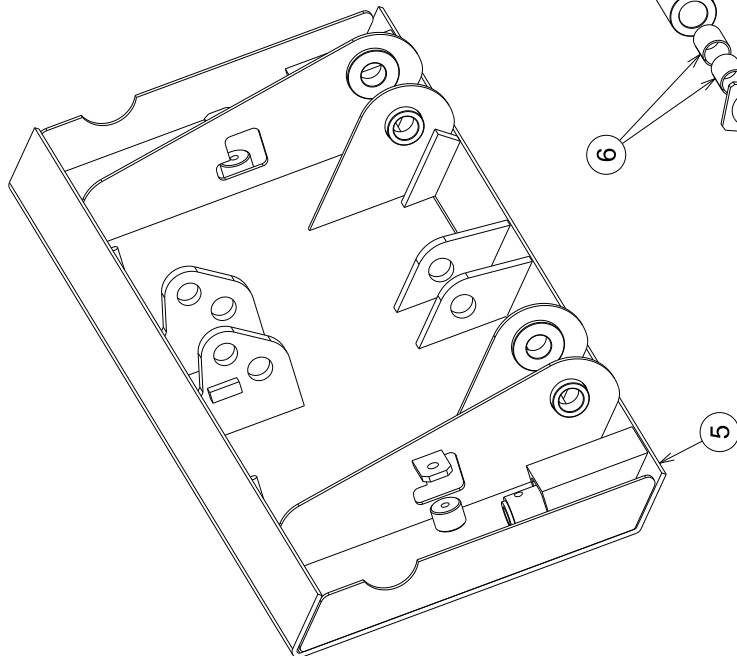
POSITION	DESCRIPTION	PART NO.	QUANTITY
1	TOOLS-HOLDER LEVER BODY	053-93500-S	1
2	PIN FOR THIRD LINK KIT	018-958-S	1
3	THIRD LINK KIT	112-909-S	1
4	PIN	018-96107-S	1
5	QUICK COUPLING BODY	053-934265-S	1
6	WEAR-PROOF BUSH L=30	223-807-S	-
7	PIN	018-96103-S	4



KIT TERZO PUNTO IDRAULICO COD.: 044-904800-S



KIT TERZO PUNTO MECCANICO COD.: 044-904802-S

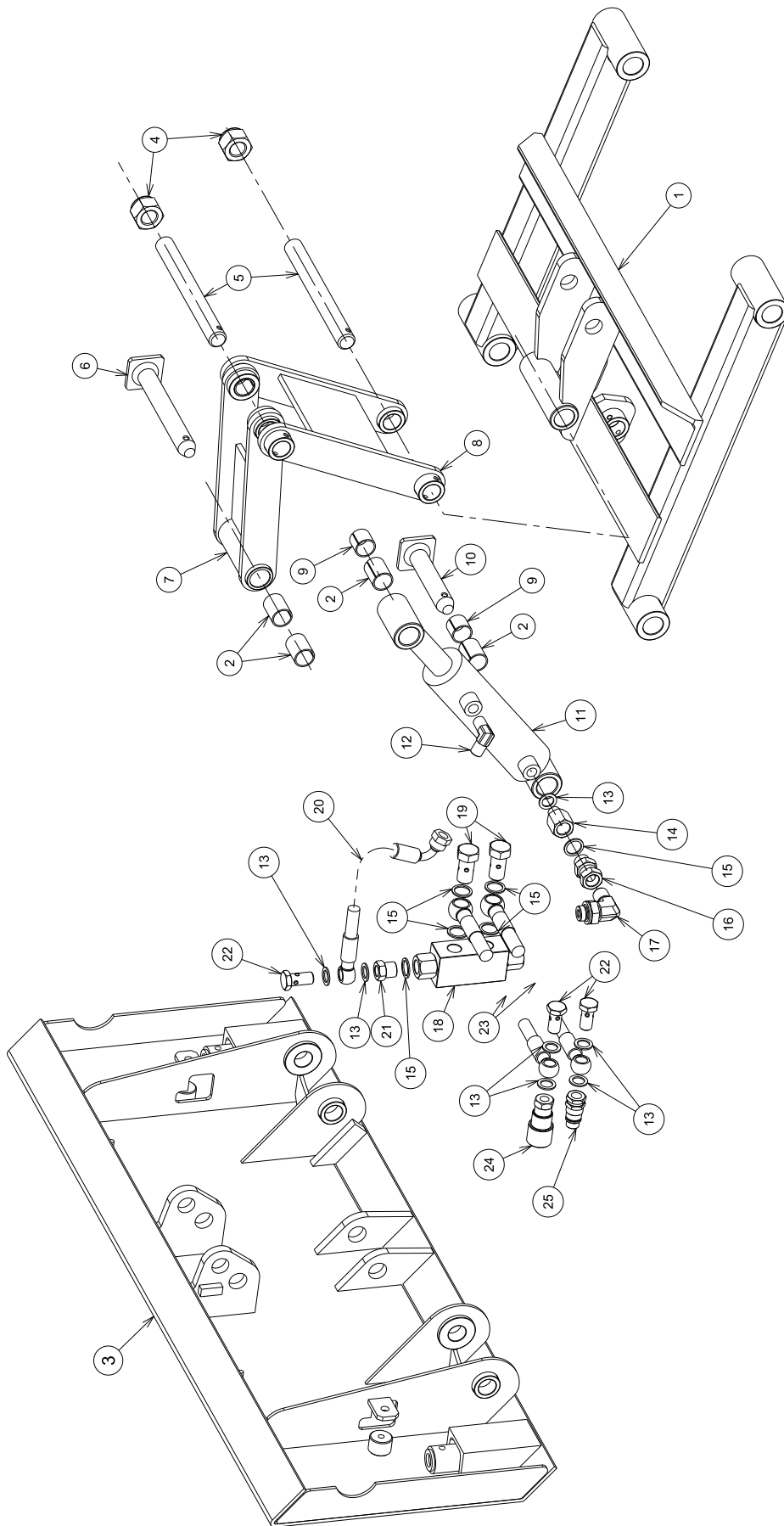


SPEEDY – CUTTER 1200 PARTS LEGENDA

HYDRAULIK THIRD LINK KIT PART No. 044-904800-S

TABLE E

POSITION	DESCRIPTION	PART NO.	QUANTITY
1	TOOLS-HOLDER LEVER BODY	053-93500-S	1
2	WEAR-PROOF BUSH L=30	223-807-S	-
3	QUICK COUPLING BODY	053-934265-S	1
4	SELF-LOCKING NUT M20	137-101-S	2
5	THREADED PIN	018-9509-S	2
6	THIRD LINK FORK PIN	018-96106-S	1
7	LOWER FORK	196-9070-S	1
8	UPPER FORK	196-9072-S	1
9	WEAR-PROOF BUSH L=20	223-806-S	-
10	THIRD LINK COUPLING PIN	018-96105-S	1
11	THIRD LINK CYLINDER	002-9085-S	1
12	90° ADAPTER JOINT	148-287-S	1
13	BONDED WASHER G ¼	015-198-S	-
14	REDUCTION EXTENSION	189-328-S	1
15	BONDED WASHER G 3/8	015-200-S	-
16	ADAPTER FITTING	148-003-S	1
17	90° FITTING	148-2986-S	1
18	VALVE	033-900-S	1
19	SCREW	188-080-S	-
20	PIPE	065-0024.554-S	1
21	PIPE	190-0205-S	1
22	SCREW	188-050-S	-
23	PIPE	065-002.0050-S	2
24	FEMALE QUICK COUPLING G ¼	262-016-S	1
25	MALE QUICK COUPLING G ¼	262-015-S	1

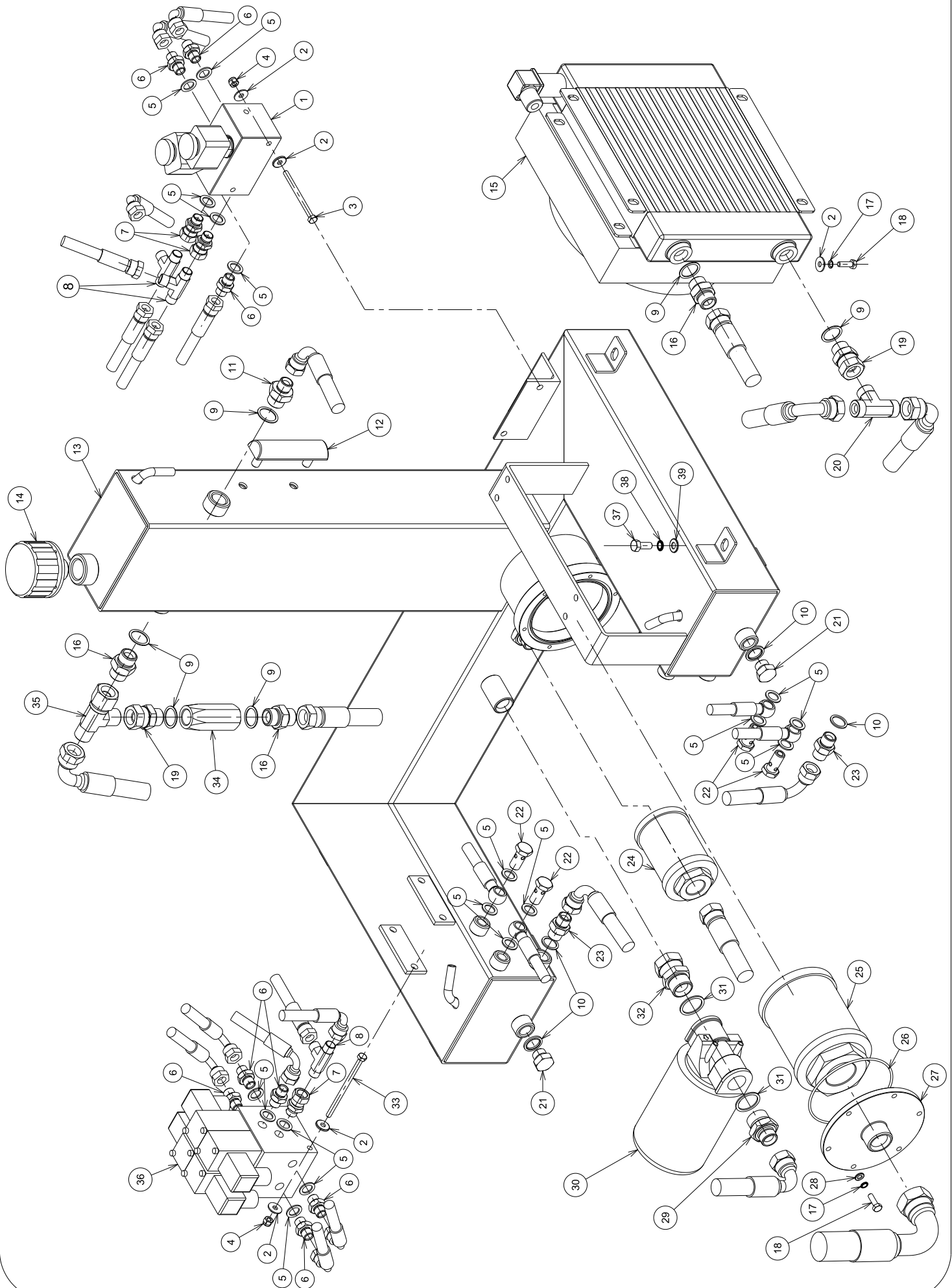


SPEEDY – CUTTER 1200 PARTS LEGENDA

TABLE F

POSITION	DESCRIPTION	PART NO.	QUANTITY
1	BRAKE /GEARBOX BLOCK BODY	053-927-S	1
2	WASHER Ø 6	015-029-S	-
3	TE SCREW M6x80	132-076-S	-
4	SELF LOCKING NUT M6	137-030-S	-
5	BONDED WASHER G ¼	015-198-S	-
6	DOUBLE SCREW G ¼	187-005-S	-
7	ADAPTER FITTING G ¼	148-003.2-S	-
8	T FITTING G ¼	148-510-S	-
9	BONDED WASHER G ½	015-201-S	-
10	BONDED WASHER G 3/8	015-200-S	-
11	DOUBLE SCREW G ½ - G 3/8	187-035-S	-
12	OIL LEVEL INDICATOR	186-010-S	1
13	HYDRAULIC OIL TANK	201-9285-S	1
14	PLASTIC PLUG	106-172-S	1
15	RADIATOR	011-801-S	1
16	DOUBLE SCREW G ½	187-045-S	-
17	ELASTIC WASHER – SNORR Ø 6	015-250-S	-
18	TE SCREW M6x20	132-063-S	-
19	ADAPTER FITTING G ½	148-004-S	-
20	T FITTING G ½	148-512-S	-
21	HEXAGONAL HEAD PLUG G 3/8	106-120-S	2
22	SCREW G ¼	188-050-S	-
23	DOUBLE SCREW G 3/8	187-025-S	-
24	SUCTION OIL FILTER	099-907-S	1
25	OIL FILTER	099-904-S	1
26	OR SEAL	023-288-S	1
27	FILTER SUPPORT FLANGE	004-9063-S	1
28	WASHER Ø 6	015-027-S	-
29	DOUBLE SCREW G ½ - G ¾	187-050-S	-
30	SUCTION OIL FILTER WITH SUPPORT	099-903-S	1
30	OIL FILTER	099-900-S	1
31	BONDED WASHER G ¾	015-202-S	-
32	ADAPTER FITTING G ¾	148-005-S	-
33	TE SCREW M6x100	132-080-S	-
34	NON RETURN VALVE	033-905-S	1
35	T FITTING G ½	148-518-S	-
36	PROPORTIONAL CONTROL BLOCK BODY	053-932-S	1
37	TE SCREW M8x20	132-101-S	-

38	ELASTIC WASHER – SNORR Ø 8	015-251-S	-
39	WASHER Ø 8	015-030-S	-

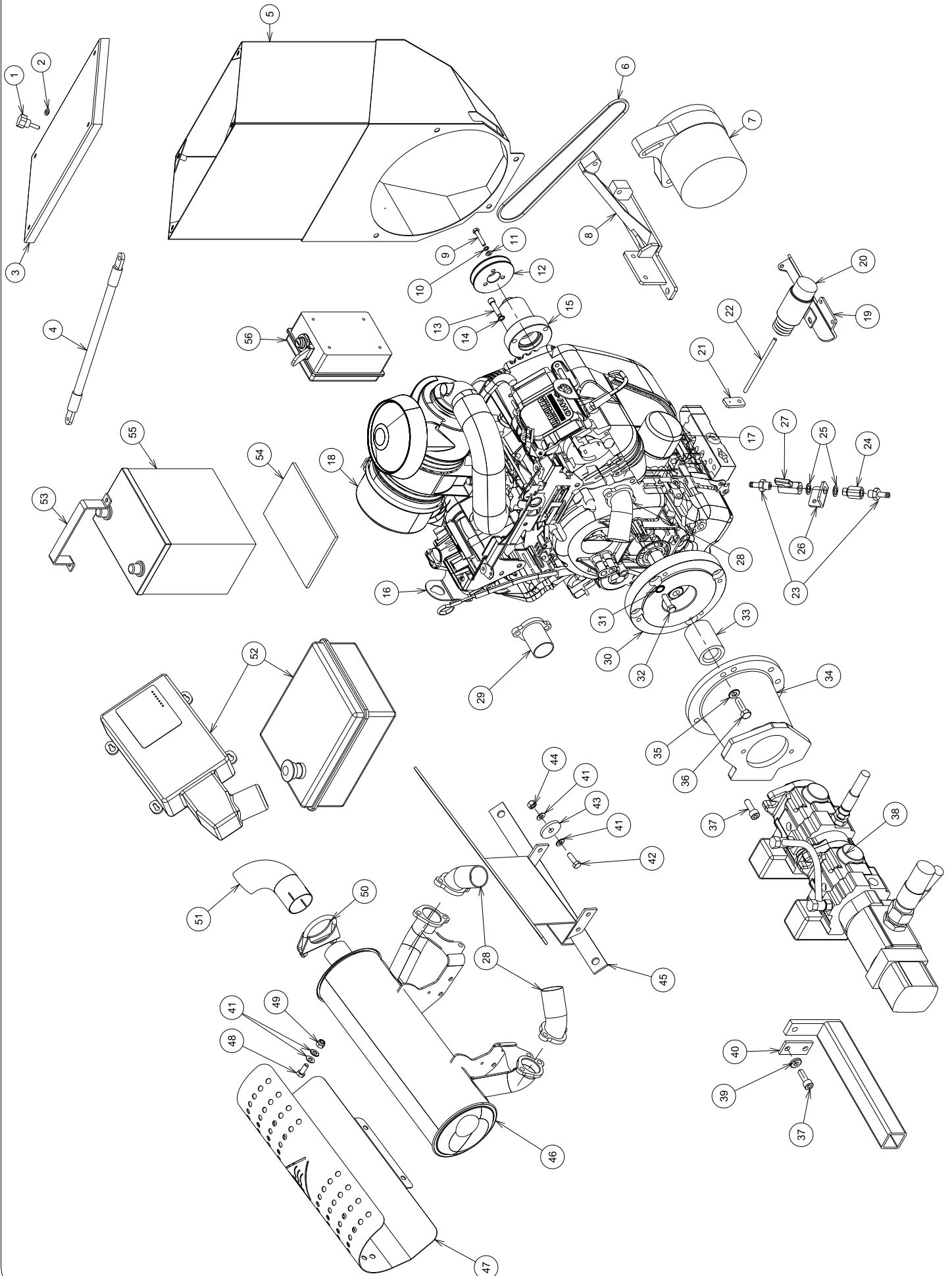


SPEEDY – CUTTER 1200 PARTS LEGENDA

TABLE G

POSITION	DESCRIPTION	PART NO.	QUANTITY
1	KNOB	185-015-S	-
2	PLASTIC WASHER	015-9070-S	-
3	ELECTRIC FAN CLOSING PANEL	124-9410-S	1
4	BATTERY CABLES KIT	252-9015-S	1
5	ELECTRIC FAN SUPPORT	010-94542-S	1
6	ALTERNATOR BELT	156-9058-S	1
7	ALTERNATOR	295-900-S	1
8	ALTERNATOR SUPPORT	010-94551-S	1
9	TE SCREW M6x35	132-067-S	-
10	ELASTIC WASHER – SNORR Ø 6	015-250-S	-
11	WASHER Ø 6	015-027-S	-
12	ALTERNATOR PULLEY	050-9080-S	1
13	SCREW TCEI. 5/16 L=1 1/4	133-605-S	-
14	ELASTIC WASHER – SNORR Ø 8	015-251-S	-
15	ALTERNATOR PULLEY SUPPORT	010-94553-S	1
16	VANGUARD ENGINE	165-831-S	1
	PLUG	286-0015-S	2
17	ENGINE OIL FILTER	099-0250-S	1
18	ENGINE AIR FILTER – PRIMARY	162-0051-S	1
	ENGINE AIR FILTER - SECONDARY	162-0056-S	1
19	ELECTROMAGNET SUPPORT	010-94547-S	1
20	ELECTROMAGNET	182-900-S	1
21	ACCELERATOR CABLE CLAMPING	120-95902-S	1
22	SCREW	092-905-S	1
23	FITTING G ¼	148-198.2-S	-
24	EXTENSION G ¼ L=32	189-032-S	1
25	BONDED WASHER G ¼	015-198-S	-
26	FUEL VALVE SUPPORT	010-94555-S	1
27	FUEL VALVE	152-016-S	1
28	45° EXHAUST GAS MANIFOLD	119-9105-S	3
	STAINLESS STEEL PIPE Ø 40	090-0085-S	-
	GLASS BRAID Ø 50	097-030-G	-
29	STRAIGHT EXHAUST GAS MANIFOLD	119-9110-S	1
30	FLY-WHEEL HOUSING SPACER	009-91172-S	1
31	ELASTIC WASHER – SNORR Ø 12	015-254-S	-
32	TE SCREW 3/8 – 16 UNC L=32	132-720-S	-
33	SPACER ON DRIVING SHAFT	009-91170-S	1
34	FLY-WHEEL HOUSING	020-90972-S	1
35	WASHER Ø 10	015-032-S	-
36	TE SCREW M10x35	132-144-S	-

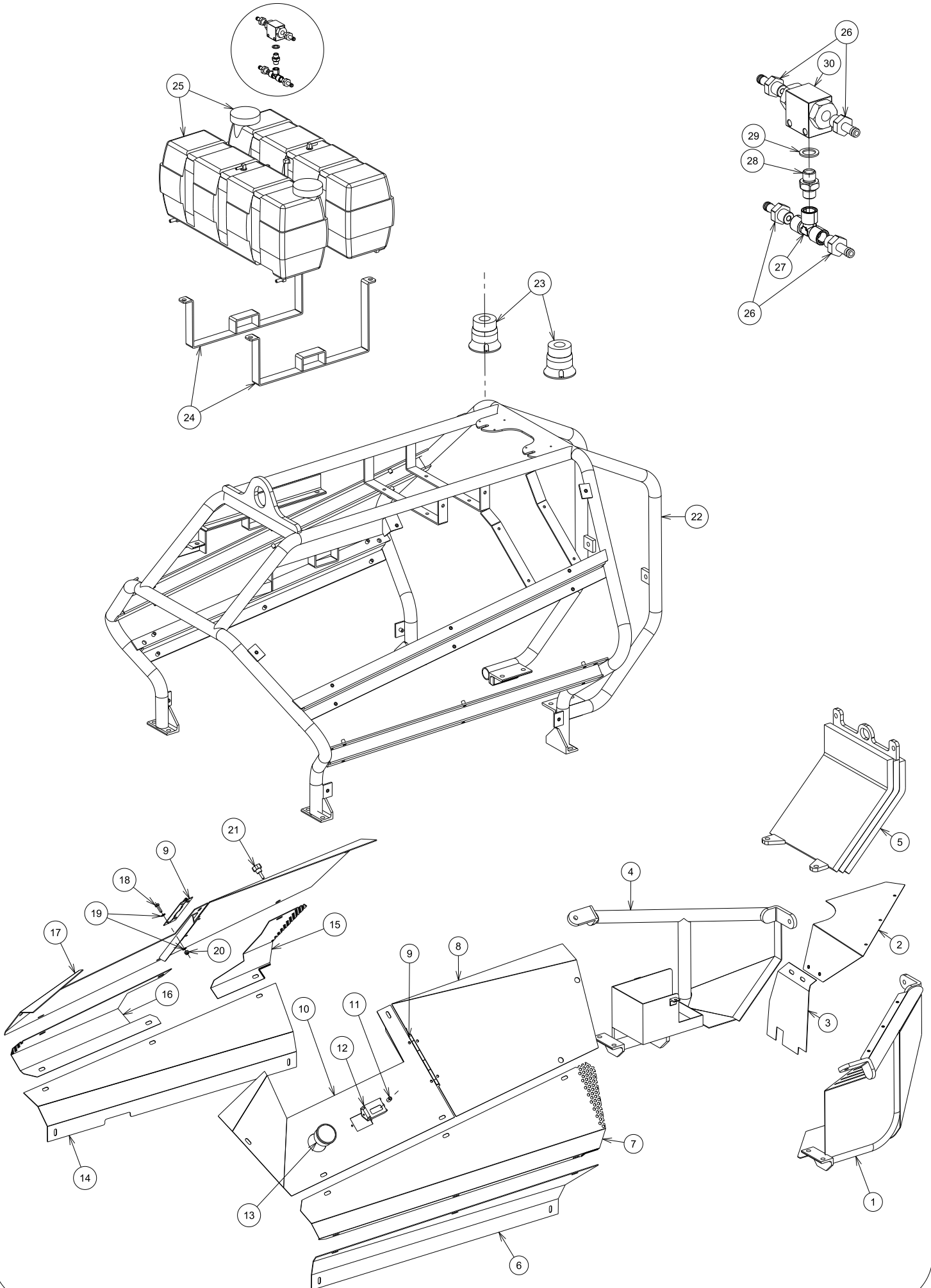
37	SCREW TCEI M10x30	133-183-S	-
38	PUMP	021-02692-S	1
39	WASHER Ø 10 SP. 4	015-0325-S	-
40	PUMP CLAMPING PLATE	208-510-S	1
41	WASHER Ø 8	015-030-S	-
42	TE SCREW M8x25	132-102-S	-
43	MUFFLERS SEAL	023-077-S	4
44	NUT M8	135-040-S	-
45	MUFFLER SUPPORT	010-94549-S	1
46	MUFLER	042-9005-S	1
47	MUFFLER PROTECTIVE GRID	124-9420-S	1
48	TE SCREW M8x20	132-101-S	-
49	SELF-LOCKING NUT M 8	137-040-S	-
50	CLAMP Ø 54	149-070-S	1
51	MUFFLER END MANIFOLD	119-9100-S	1
52	REMOTE-CONTROL KIT	044-91265-S	1
	REMOTE-CONTROL BATTERY	174-9050-S	-
	BATTERY CHARGER 12-28Vdc	174-9051-S	
	MAGNETIC KEY	215-900-S	-
53	BATTERY HOLDER	115-900-S	1
54	RUBBER PLATE FOR BATTERY	177-9152-S	1
55	BATTERY	174-900-S	1
56	ELECTRIC BOX	029-200-S	1
	STARTING BLOCK	274-014-S	1
	No. 2 STARTING KEYS	127-1530-S	-
	KEY COVER	127-1531-S	1
	FUSE	082-060-S	1
	5 WAYS CONNECTOR	127-115-S	1
	CABLE PRESS PG21	242-025-S	1
	PG21 CABLE PRESS METAL RING	242-1000-S	1
	RELAY 12 V – 15-30A	247-200-S	1
FUSE CARRIER BOX	270-020-S	1	



SPEEDY – CUTTER 1200 PARTS LEGENDA

TABLE H

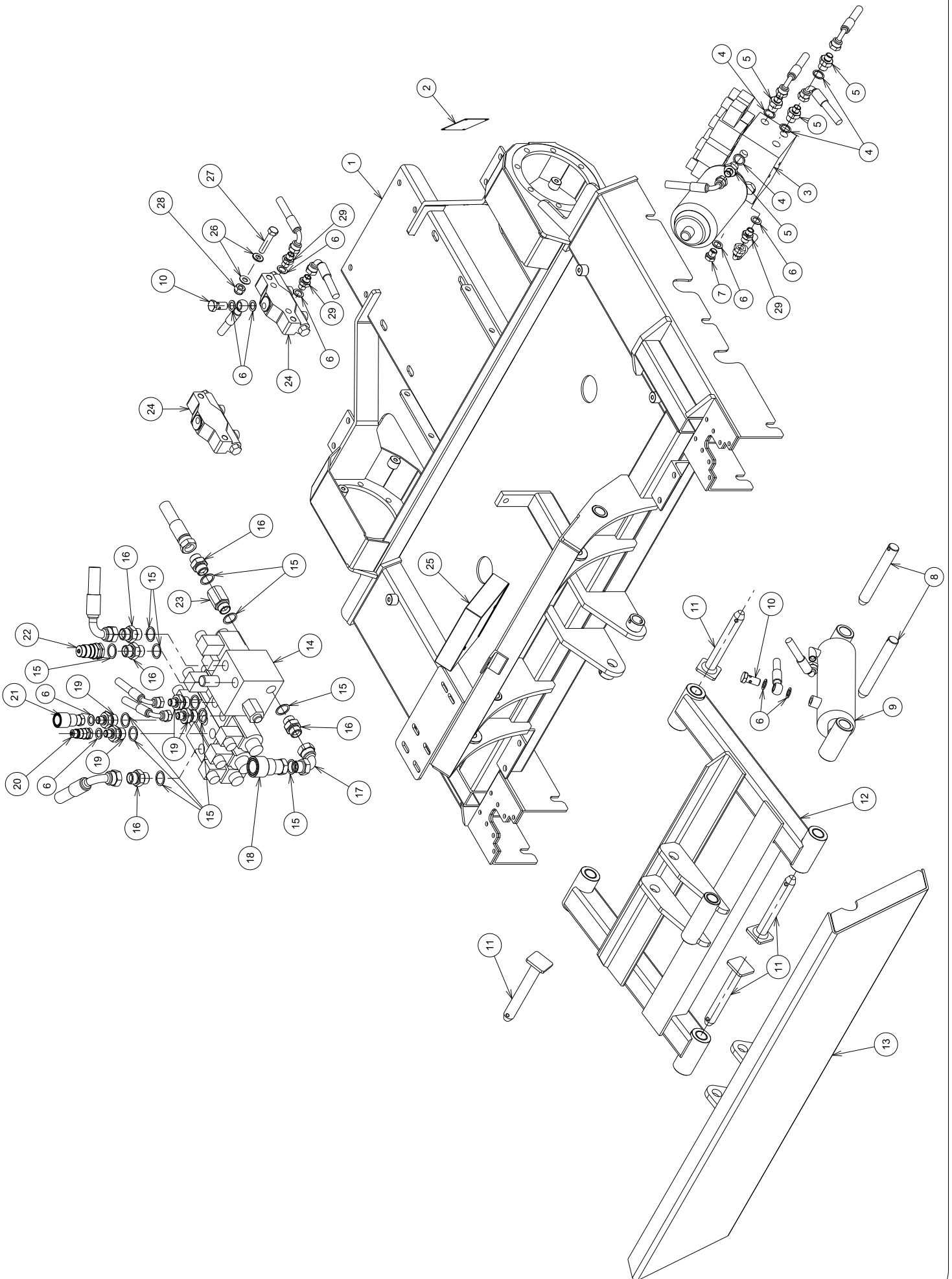
POSITION	DESCRIPTION	PART NO.	QUANTITY
1	LEFT ENGINE PROTECTIVE CASE	005-92982-S	1
2	ALTERNATOR PROTECTIVE UPPER CASE	005-92984-S	1
3	ALTERNATOR PROTECTIVE SIDE CASE	005-92985-S	1
4	RIGHT ENGINE PROTECTIVE CASE	005-92983-S	1
5	BALANCE WEIGHTS KIT	044-98205-S	1
6	LEFT TRACK PROTECTIVE PANEL	124-9413-S	1
7	GRID PANEL	124-9419-S	1
8	LEFT DOOR	110-9252-S	1
9	HINGE	007-0115-S	2
10	LEFT FUEL TANK PROTECTIVE PANEL	124-9416-S	1
11	HOUR-COUNTER CLAMPING SPACER	009-263-S	2
12	HOUR-COUNTER	180-100-S	1
13	GAUGE	206-055-S	1
	GAUGE PIPE	089-178-S	1
14	RIGHT TRACK PROTECTIVE PANEL	124-9412-S	1
15	REAR GRID PANEL ON MUFFLER SIDE	124-9418-S	1
16	FRONT GRID PANEL ON MUFFLER SIDE	124-9421-S	1
17	RIGHT FUEL TANK PROTECTIVE PANEL	124-9415-S	1
18	TE SCREW M6x20	132-063-S	-
19	WASHER Ø 6	015-027-S	-
20	SELF-LOCKING NUT M 6	137-030-S	-
21	KNOB	185-015-S	-
22	ROLL-BAR FRAME	038-9315-S	1
23	YELLOW BLINKING LIGHT	142-900-S	1
	RED BLINKING LIGHT	142-9002-S	1
24	FUEL TANK SUPPORT	010-94505-S	2
25	FUEL TANK	201-951-S	2
	PLUG	193-902-S	1
26	FITTING	148-198.2-S	-
27	T FITTING G ¼	148-142-S	-
28	DOUBLE SCREW G ¼	187-005-S	-
29	BONDED WASHER G ¼	015-198-S	-
30	SELECTOR VALVE	033-9112-S	1



SPEEDY – CUTTER 1200 PARTS LEGENDA

TABLE I

POSITION	DESCRIPTION	PART NO.	QUANTITY
1	CHASSIS	038-9305-S	1
2	PLATE	238-139-S	1
3	FLOATING BLOCK BODY	053-9325-S	1
4	BONDED WASHER G 3/8	015-200-S	-
5	DOUBEL SCREW G 3/8 A G ¼	187-010-S	-
6	BONDED WASHER G ¼	015-198-S	-
7	HEXAGONAL HEAD PLUG G ¼	106-115-S	-
8	CYLINDER PIN	018-96104-S	2
9	CYLINDER	002-926-S	1
10	SCREW G ¼	188-050-S	-
11	PIN	018-96103-S	4
12	LEVER BODY	053-93500-S	1
13	QUICK COUPLING BODY	053-934265-S	1
14	DISTRIBUTOR	962-02905-S	1
15	BONDED WASHER G ½	015-201-S	-
16	DOUBLE SCREW G ½	187-045-S	-
17	90° FITTING G ¼	148-296.5-S	-
18	FEMALE QUICK COUPLING G ½	262-019-S	-
19	DOUBLE SCREW G ½ TO G ¼	187-047-S	-
20	MALE QUICK COUPLING G ¼	262-015-S	-
21	FEMALE QUICK COUPLING G ¼	262-016-S	-
22	MALE QUICK COUPLING G ½	262-018-S	-
23	EXTENSION	189-107-S	-
24	EXCHANGE VALVE	033-925-S	2
25	DIFFUSER BLOCK BODY	053-9265-S	1
26	WASHER Ø 10	015-032-S	-
27	TE SCREW M 10x50	132-147-S	-
28	SELF-LOCKING NUT M 10	137-050-S	-
29	DOUBLE SCREW G ¼	187-005-S	-



Posizione	Codice	Descrizione	Q.tà
01	065-000.00500-S	Tubazione 3/16 FD+O L=520	1
02	065-000.00506-S	Tubazione 3/16 FD+O L=580	1
03	065-000.00600-S	Tubazione 3/16 F90°+O L=450	4
04	065-000.1924-S	Tubazione 1/4 F90°+F90° L=400	1
05	065-000.21-S	Tubazione 1/4 F90°+F90° L=800	1
06	065-000.213-S	Tubazione 1/4 F90°+F90° L=830	3
07	065-000.215-S	Tubazione 1/4 F90°+F90° L=850	2
08	065-000.5151-S	Tubazione 1/4 F90°+FD L=850	1
09	065-000.52-S	Tubazione 1/4 F90°+FD L=870	1
10	065-000.523-S	Tubazione 1/4 F90°+FD L=900	1
11	065-000.5238-S	Tubazione 1/4 F90°+FD L=980	1
12	065-0015.6080-S	Tubazione 1/4 O+O L=680	2
13	065-002.01004-S	Tubazione 1/4 F45°+O L=600	1
14	065-002.01006-S	Tubazione 1/4 F45°+O L=640	1
15	065-0024.580-S	Tubazione 1/4 F90°+O L=800	2
16	065-004.280-S	Tubazione 3/8 F90°+F90° L=800	1
17	065-004.307-S	Tubazione 3/8 F90°+F90° L=1070	1
18	065-016.50-S	Tubazione 3/8 O+O L=360	1
19	065-019.341-S	Tubazione 3/8 F90°+FD L=490	4
20	065-019.614-S	Tubazione 3/8 F90°+FD L=1140	1
21	065-255.0-S	Tubazione 1" F90°+FD L=500	1
22	065-409.01-S	Tubazione 1/2 F90°+F90° L=480	1
23	065-578-S	Tubazione 1/2 FD+F90° L=450	1
24	065-588-S	Tubazione 1/2 FD+F90° L=680	1
25	065-659.99-S	Tubazione 1/2 F90°+F90° L=500	1
26	065-667.68-S	Tubazione 1/2 F90°+F90° L=680	1
27	065-683.1-S	Tubazione 1/2 F90°+F90° L=780	1
28	065-923.806-S	Tubazione 1/2 F45°+F90° L=600	1
29	065-949.66-S	Tubazione 3/8 F90°+FD° L=960	1
30	065-949.6652-S	Tubazione 3/8 F90°+FD° L=1120	2
31	065-949.745-S	Tubazione 3/8 F90°+F90° L=550	1

Circuito idraulico Speedy Cutter 1200

- Motore Vanguard, 3600 g/1', 31 Cv
- Pompa Axial 6+6+11+1,9 pressione max 200 bar

